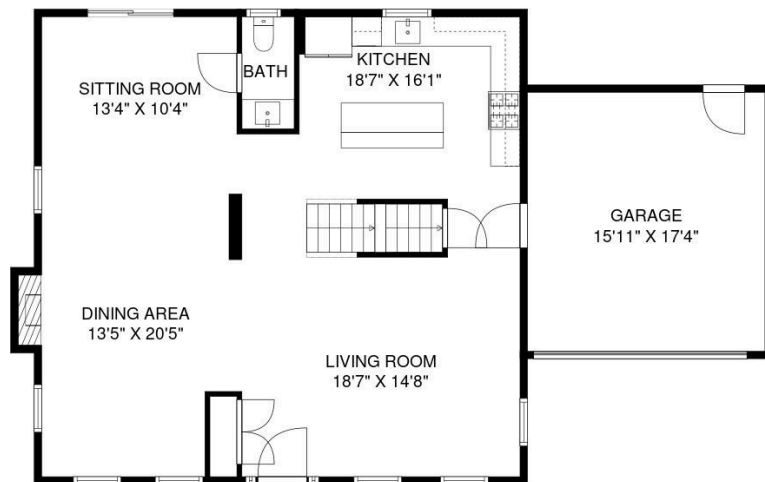




ALLISON ZIEFERT
REAL ESTATE GROUP

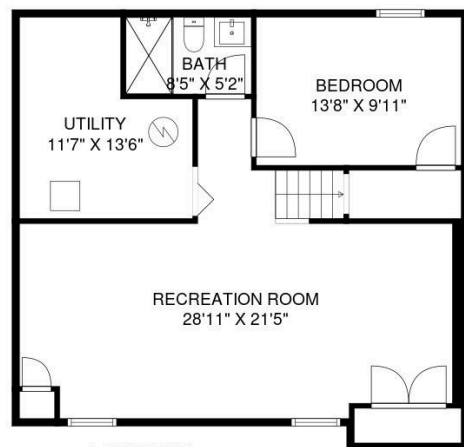
COMPASS



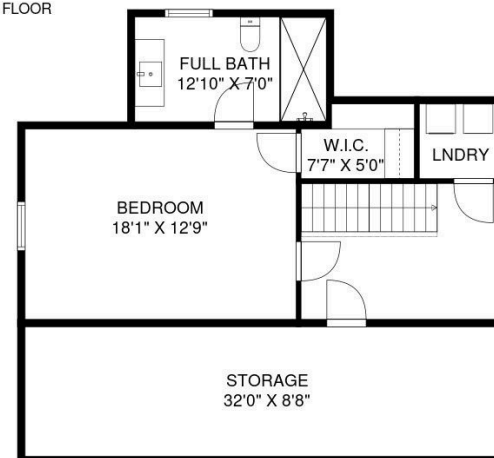
FIRST FLOOR



SECOND FLOOR



LOWER LEVEL



THIRD FLOOR

388 Thornden Street | South Orange Village, New Jersey

6 Bedrooms | 4.1 Bathrooms

NOT TO SCALE - This floor plan is provided for illustration purposes only.
Room positions and dimensions are approximate and should be independently measured for accuracy.

Compass RE is a licensed real estate broker and abides by Equal Housing Opportunity laws. All material presented herein is intended for informational purposes only. Information is compiled from sources deemed reliable but is subject to errors, omissions, changes in price, condition, sale, or withdrawal without notice. No statement is made as to accuracy of any description. All measurements and square footages are approximate. This is not intended to solicit property already listed. Nothing herein shall be construed as legal, accounting or other professional advice outside the realm of real estate brokerage.